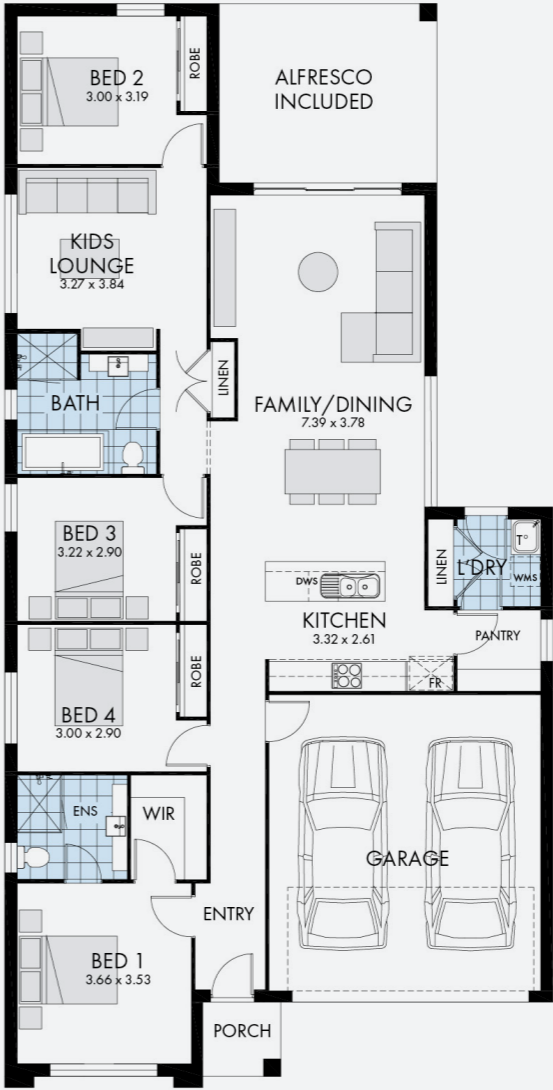


GUILD
BUILDER

Thrive
Homes



Artist's impression



AREAS	
Living	155.06m ²
Garage	35.81m ²
Alfresco	16.00m ²
Porch	2.37m ²
Total	209.24m²

— ESPY 22 WITH COVE FAÇADE —

House and Land Package \$642,900*

 209m²



 4

 2

 Lot No. 826

 Lot Size 420m²

Builder Terms and Conditions apply.

*Based on separate house and land contracts.