

GUILD
BUILDER



ACHIEVE HOMES



Artist's impression



AREAS	
Living	143.0m ²
Garage	37.0m ²
Alfresco	14.0m ²
Porch	3.5m ²
Total	197.5m²

— NADIA 19 —

House and Land Package \$610,000*

 130m²



 3

 2

 Lot No. 954

 Lot Size 533m²

Builder Terms and Conditions apply.

*Based on separate house and land contracts.

A modern single-story house with a dark grey corrugated metal roof. The house features a white garage door on the left, a wooden front door with horizontal slats in the center, and large glass windows on the right. The exterior walls are a mix of light grey horizontal siding and dark grey brickwork. The house is set on a green lawn with a blue driveway and a blue sky with clouds in the background. A small tree and some shrubs are planted in front of the house.

Floor Plan Details:

- ALFRESCO:** 3.85 m x 2.87 m
- BED 1:** 3.75 m x 3.69 m
- BED 2:** 3.00 m x 3.00 m
- BED 3:** 3.00 m x 3.00 m
- BATH:** Includes linen closet (LINEN), laundry (L'DRY), and wardrobe (WIR).
- KITCHEN:** 2.99 m x 2.50 m, includes WIP (water inlet point) and FR (fridge).
- LIVING:** 3.60 m x 3.82 m
- MEALS:** 3.90 m x 5.43 m
- PORCH:** 2.15 m x 1.77 m
- GARAGE:** 6.00 m x 5.50 m
- ENTRY:** 2.10 m x 1.58 m
- WC:** Located near Bed 2.
- ROBE:** Wardrobe area near Bed 3.
- ENS:** Ensuite bathroom near Bed 2.

Windows and Doors:

- Windows: SW 1818, AW 0906, AW 2121, AW 2110, AW 1809, AW 1824, SW 1215, AW 0906.
- Doors: 720 CSD, 770, 820, 4800mm WIDE PANEL LIFT DOOR.

AREAS

Living	124.0m ²
Garage	37.0m ²
Alfresco	11.0m ²
Porch	4.0m ²
Total	176.0m²



3



- Lot No. 954

- Lot Size 533m²

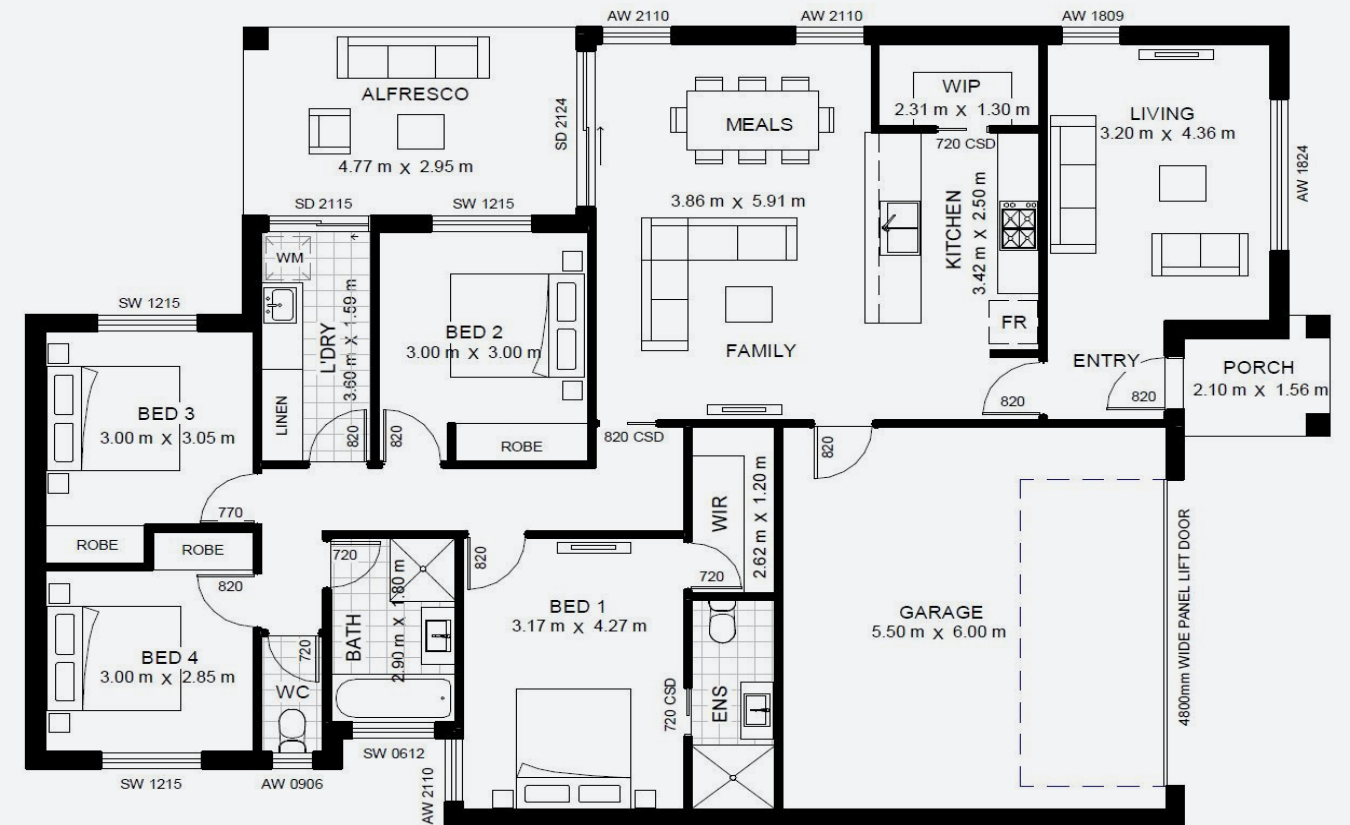
GUILD
BUILDER



ACHIEVE HOMES



Artist's impression



AREAS

Living	143.0m ²
Garage	37.0m ²
Alfresco	14.0m ²
Porch	3.5m ²
Total	197.5m²

— GRANADA 21 —

House and Land Package \$620,000*



143m²



4



2



Lot No. 954



Lot Size 533m²